



QNE SOFTWARE SDN. BHD. (611852-V)

Suite 25-3, Plaza Cheong Hin, Jalan SP 2/1,
Taman Serdang Perdana,
43300 Seri Kembangan, Selangor.
Tel: +603 8943 3080 Fax: +6038943 1080 Email: admin @qne.com.my

How to check what QNE version to install.

Scenario: Purchase additional user license and install system to a new computer/ workstation

Check the version used in Server / other workstation

1. Open QNE system in Server or other workstation
2. Check the version display in the user login screen (as shown in the picture below).



3. After that, log in to <https://www.qne.com.my/downloads/> and download the same version.
Note : if the version is not available in the website, please contact your software vendor for further instructions.

QNE OPTIMUM - PUBLIC VERSIONS	QNE OPTIMUM - DEVELOPMENT VERSIONS
V. 2018.0.0.1 view more	V.2018.1.0.2 view more
V. 2017.4.1.3 view more	V.2018.1.0.1 view more
V. 2017.4.1.2 view more	V.2018.1.0.0 view more
V. 2017.4.0.8 view more	V.2017.5.2.0 view more
V. 2017.4.0.7 view more	V.2017.5.1.9 view more



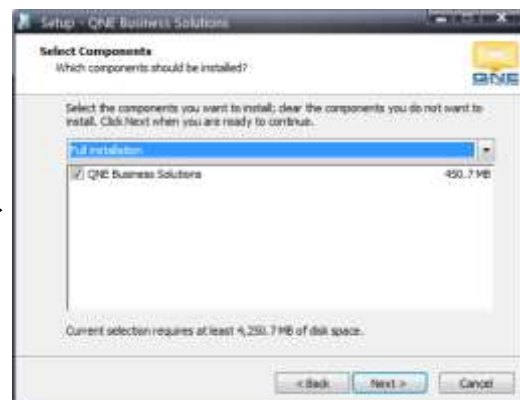
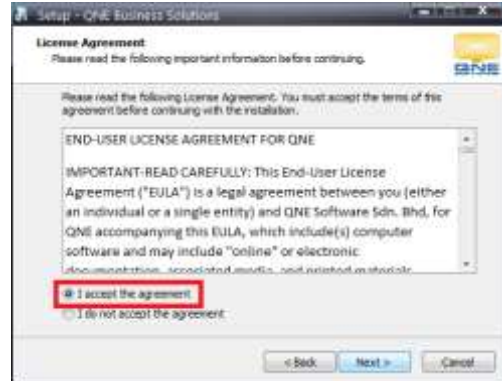
QNE SOFTWARE SDN. BHD. (611852-V)

Suite 25-3, Plaza Cheong Hin, Jalan SP 2/1,
Taman Serdang Perdana,
43300 Seri Kembangan, Selangor.
Tel: +603 8943 3080 Fax: +6038943 1080 Email: admin @qne.com.my

- After the download is completed, right click on the Setup.exe file and select 'Run as Administrator'



- To install the QNE Optimum to the new computer / workstation, follow the on-screen instructions.





QNE SOFTWARE SDN. BHD. (611852-V)

Suite 25-3, Plaza Cheong Hin, Jalan SP 2/1,
Taman Serdang Perdana,
43300 Seri Kembangan, Selangor.

Tel: +603 8943 3080 Fax: +6038943 1080 Email: admin @qne.com.my



6. QNE Optimum will launch after you click on the Finish button. Double check on the version (as shown in the picture below)

