

(Optimum)
Login Failed -
Cannot access a
disposed object

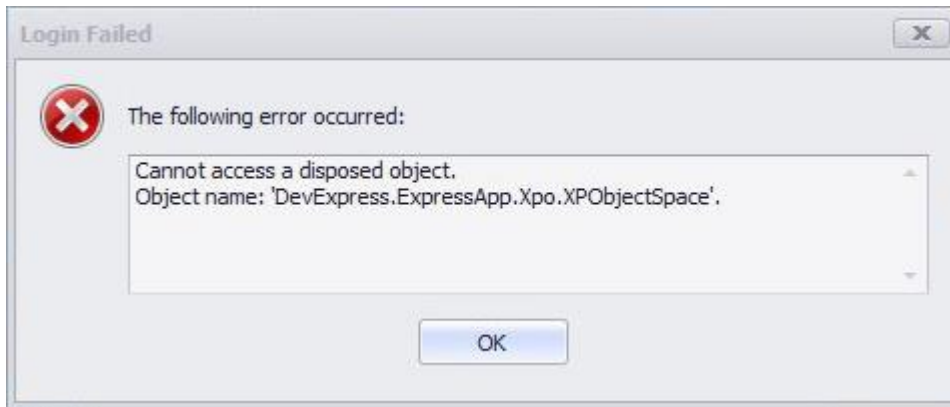
[Version 1.0]

Jason Lee

[13/05/2019]



SCENARIO



Login QNE Optimum prompted

Cannot access a disposed object

Object name: 'DevExpress.ExpressApp.Xpo.XPOBJECTSPACE'.

SOLUTION

1. Fully close QNE Optimum (winapp.exe) and re-open QNE Optimum (winapp.exe)

**On-going connection existed and require fully close application (winapp.exe) to refresh/reset application connection