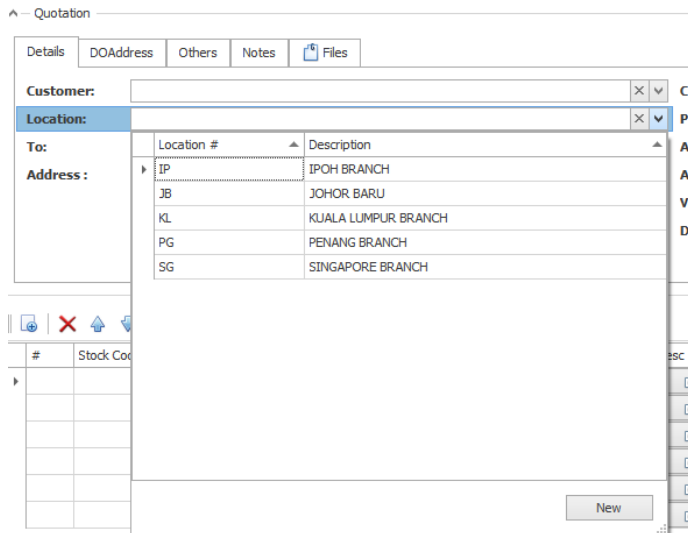


1. What is Lookup Property Editor?

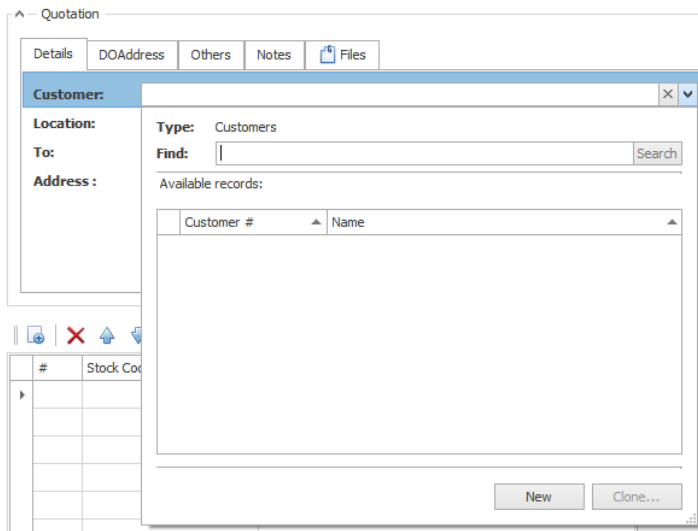
A lookup property editor refers to a dropdown list associates with a collection of objects, which will look like this:



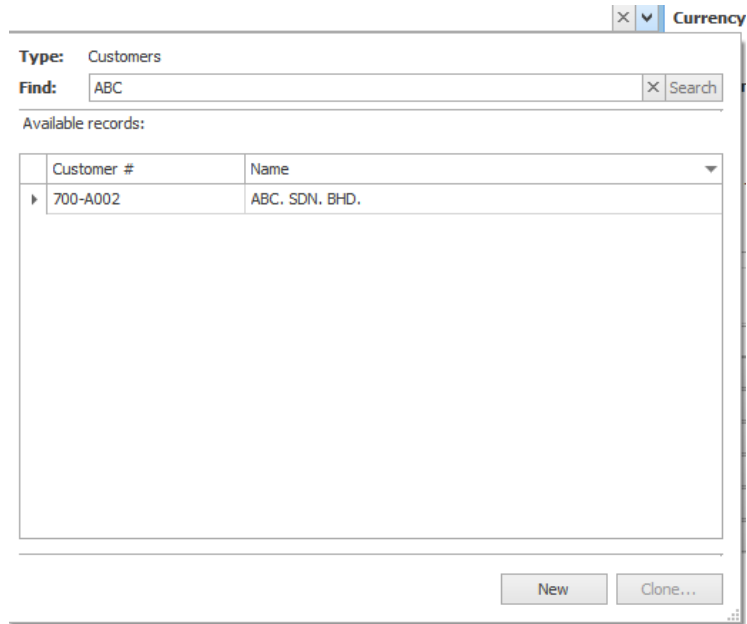
2. Why does it behave differently under different situations?

- a. If the lookup property's data source has less than 50 records, all of these objects will be retrieved from the database immediately, as the snapshot shown above.
- b. To optimize the performance, if the data source of the lookup property editor contains more than 50 records, none of these objects is retrieved, and the **Search** feature is available.

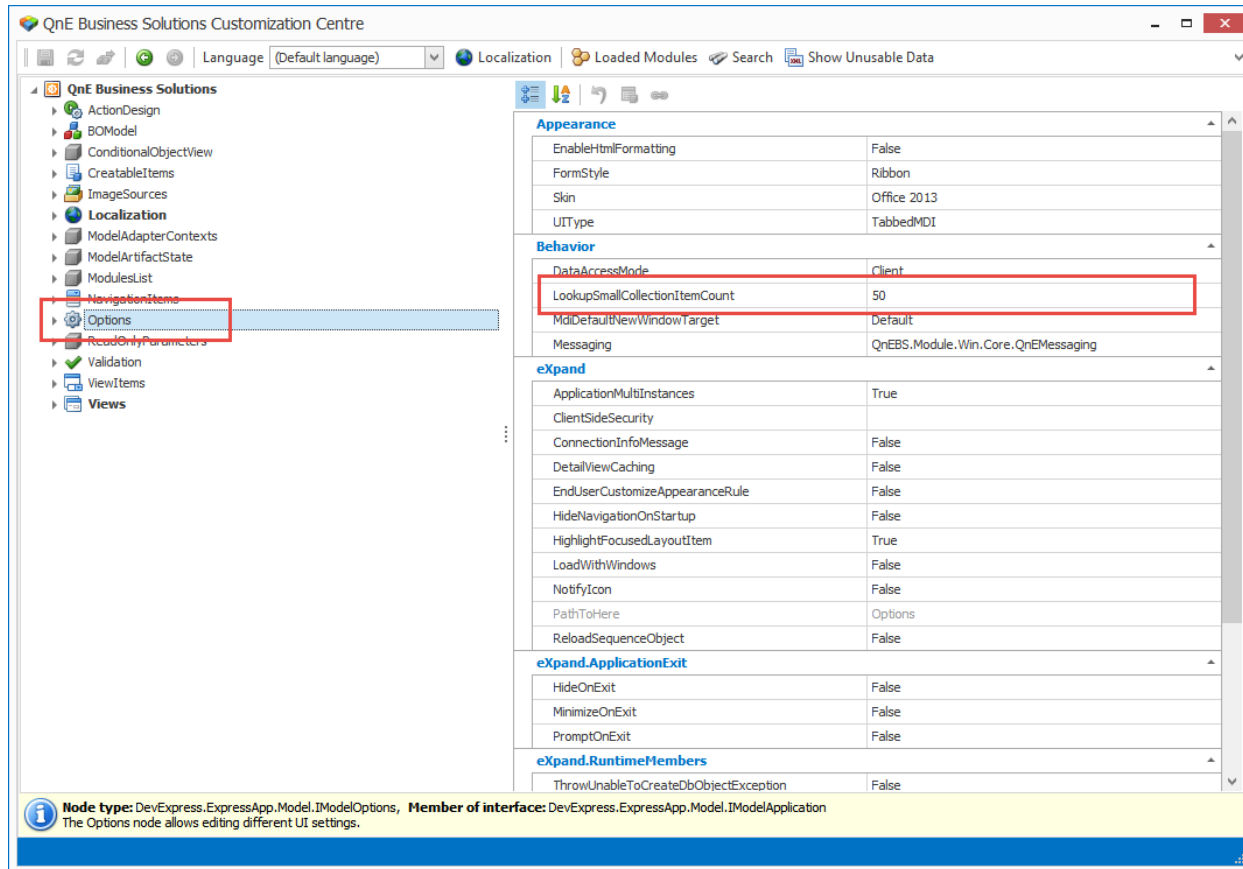
Quotations



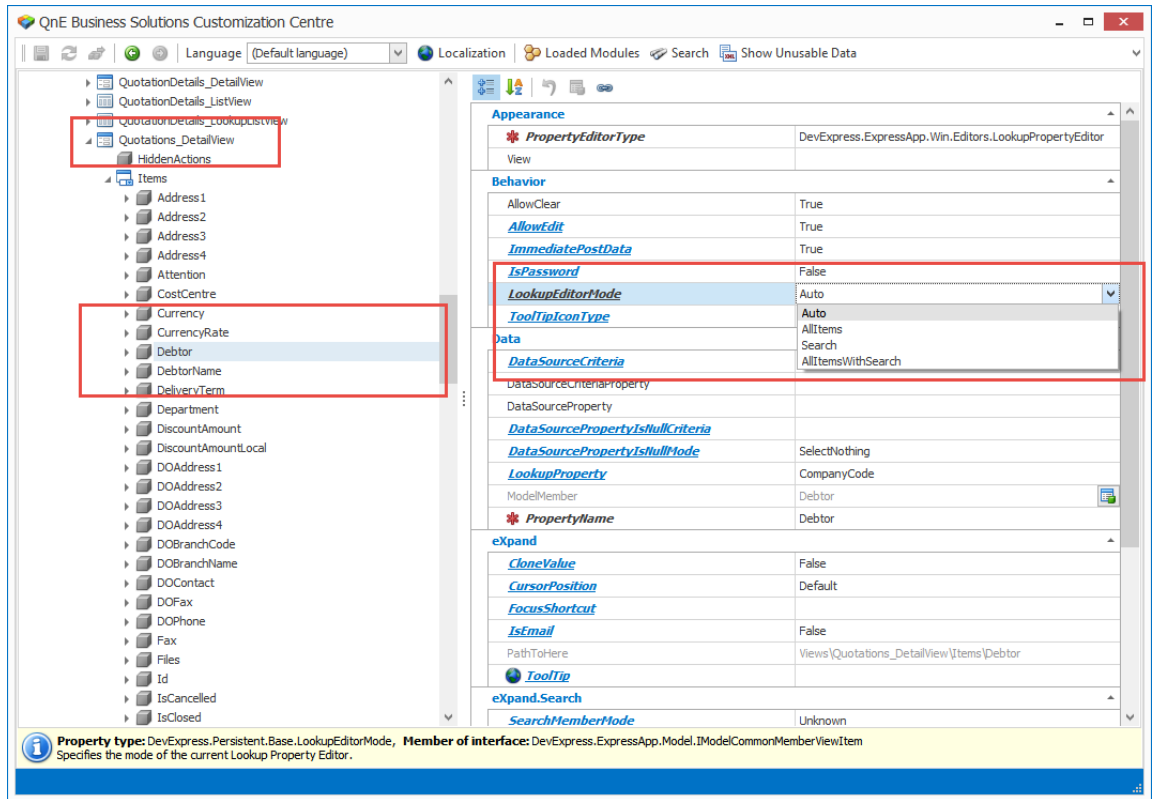
By using the search function, objects will be filtered with the given keywords and loaded into the list.



3. How do I change the default setting of the **50 Records** limit, and set it to greater number when I use internal network and have a high performance server?
- Open the Customization Centre from Tools->Customization Centre
 - Navigate to Options
 - Look for LookupSmallCollectionItemCount
 - Change this property's value



4. Is it possible to force system to load all items regardless the objects count?
Yes it's possible. In this example, I am going to change the loading behavior of the Debtor in Quotation Detail View.
1. Open the Customization Center, navigate to the view you want to customize.
 2. Navigate to the property "Debtor"
 3. Set the LookupEditorMode to "AllItems"



4. Save the changes and back to the main application, you will see the system will load all the debtors even it has more than 50 records.

Quotations

^ - Quotation

Details DOAddress Others Notes Files

Customer: [Dropdown] **Currency:** [Dropdown]

Location: [Dropdown]

To: [Dropdown]

Address: [Text Area]

Customer #	Name
700-W002	WEST DIGITAL SDN BHD
700-W001	WAI HONG INTERNATIONAL TRADING
700-U002	US TECHNOLOGY LIMITED
700-U001	UOK (M) SDN. BHD
700-T001	TRIWAY DEBTOR
0009567	TEKNOLOGY EDGE S/B
0009918	TEKNOLOGY EDGE S/B
0012467	TEKNOLOGY EDGE S/B
0005997	TEKNOLOGY EDGE S/B
0001647	TEKNOLOGY EDGE S/B
0004041	TEKNOLOGY EDGE S/B
0009358	TEKNOLOGY EDGE S/B
0005349	TEKNOLOGY EDGE S/B
0003964	TEKNOLOGY EDGE S/B
0005360	TEKNOLOGY EDGE S/B
0000966	TEKNOLOGY EDGE S/B
0010000	TEKNOLOGY EDGE S/B

Stock Code

New Clone...

5. There is also another option "AllItemsWithSearch"



Quotations

Quotation

Details DOAddress Others Notes Files

Customer: Close Dropdown **Currency:**

Location: **Type:** Customers

To: **Find:**

Address : Available records:

Customer #	Name
700-W002	WEST DIGITAL SDN BHD
700-W001	WAI HONG INTERNATIONAL TRADING
700-U002	US TECHNOLOGY LIMITED
700-U001	UOK (M) SDN. BHD
700-T001	TRIWAY DEBTOR
0009567	TEKNOLOGY EDGE S/B
0009918	TEKNOLOGY EDGE S/B
0012467	TEKNOLOGY EDGE S/B
0005997	TEKNOLOGY EDGE S/B
0001647	TEKNOLOGY EDGE S/B
0004041	TEKNOLOGY EDGE S/B
0009358	TEKNOLOGY EDGE S/B