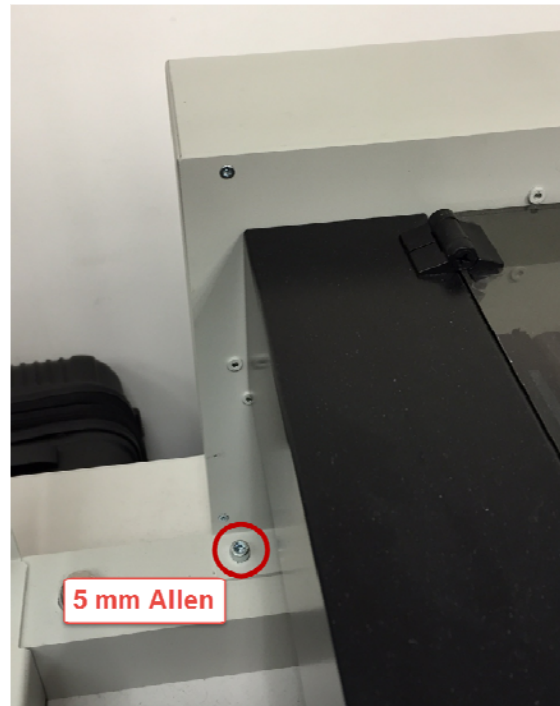
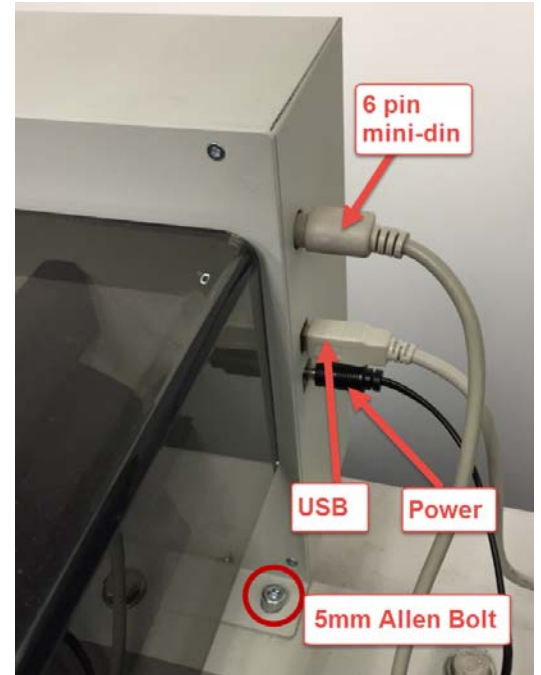


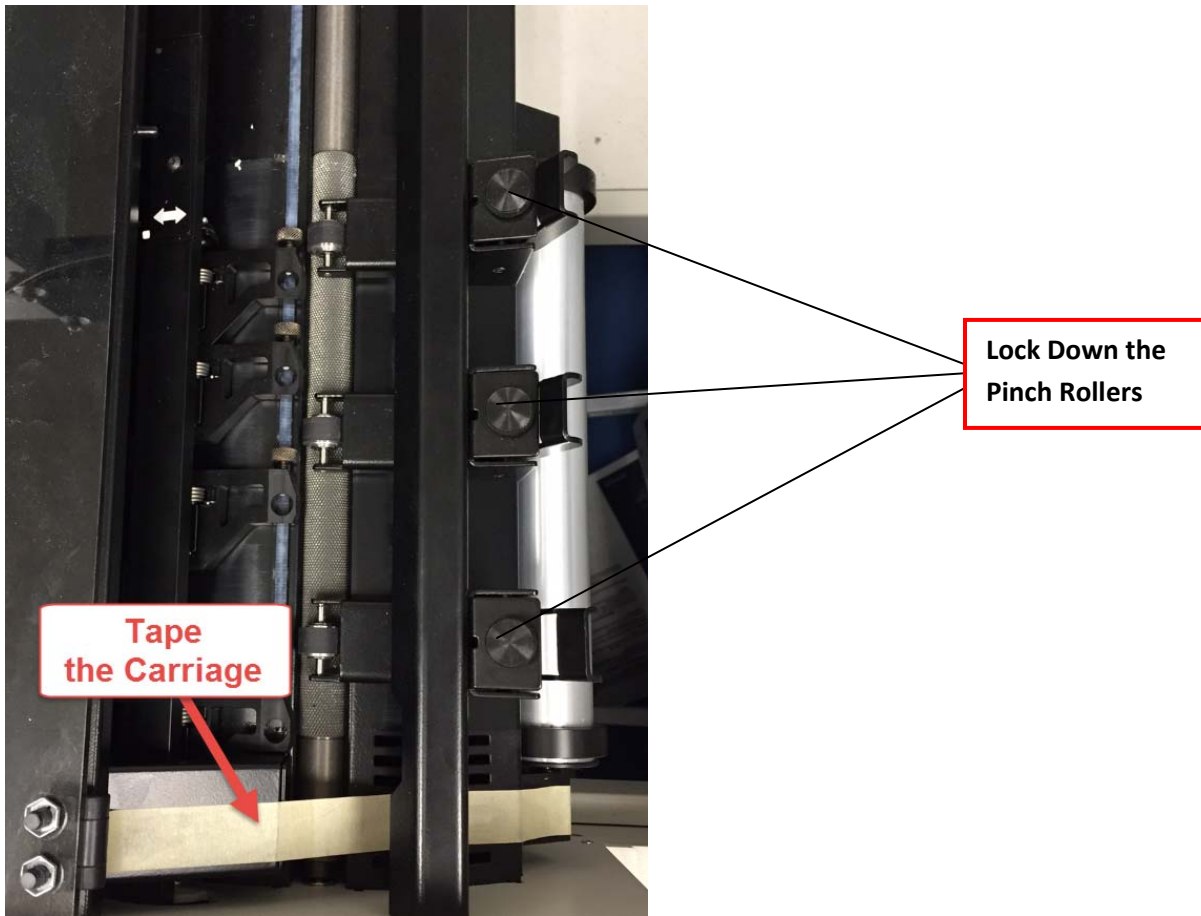
## Swapping the FX1200 Cutter Module

The FX1200 Cutter is designed to be easily removed so that it can be serviced at our repair facility. Follow the instructions below:

- 1.** Remove Paper from the FX1200. Remove any blade holders unless tech support has requested they be sent in for testing.
- 2.** Remove the power, six pin mini-din and USB cables from the back right side of the cutter module.
- 3.** Using a 5mm Allen wrench remove 4 bolts from the front and back of the cutter were indicated. Set the bolts aside. Do not send them with the cutter module.



4. Tape the cutter carriage to the front edge of the travel area. Lock all pinch rollers in place.



5. Lift the cutter module up, out the back of the FX1200. Primera recommends two people for this procedure.

6. Package the cutter in a box with at least 3 inches of bubble wrap on all sides or use the cutter module repair box.